



Söring

INNOVATIVE SURGERY

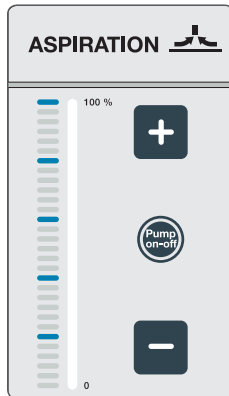
At a glance: **ultrasonic generator SONOCA 300**

- Integrity check during start-up
- Plug&Play including automatic instrument detection and instrument check
- Automatic setting of appropriate working parameters
- Working frequencies of 25, 35 or 55 kHz
- Simple and intuitive use
- Extremely quick set-up
- For multiple specialties (Neurosurgery, Spine surgery, UAW, Liver surgery)



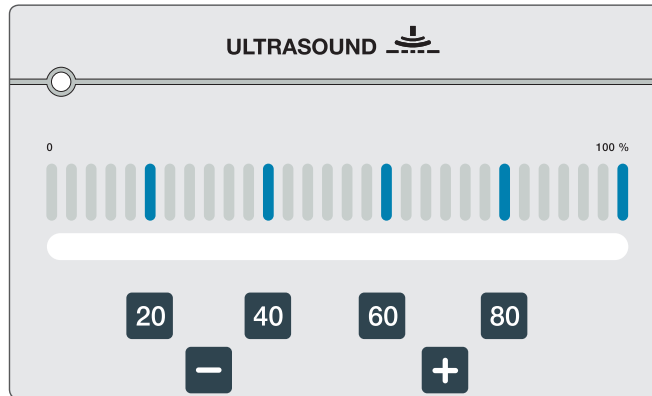


Designed with performance and flexibility: **for user-friendly operation**



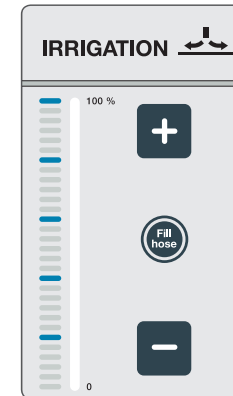
Operator control panel for aspiration

- Percental display
- Increase and decrease aspiration pressure
- Button for switching on and off aspiration



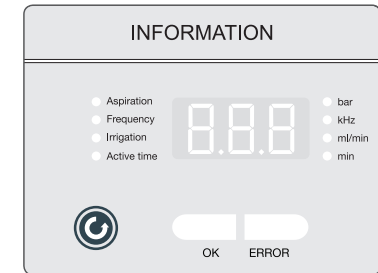
Operator control display for ultrasonic power

- Percental display
- Increase and decrease ultrasonic power
- Direct selection of ultrasonic power



Operator control panel for irrigation

- Percental display
- Increase and decrease irrigation flow
- Button for filling the double or irrigation tubing



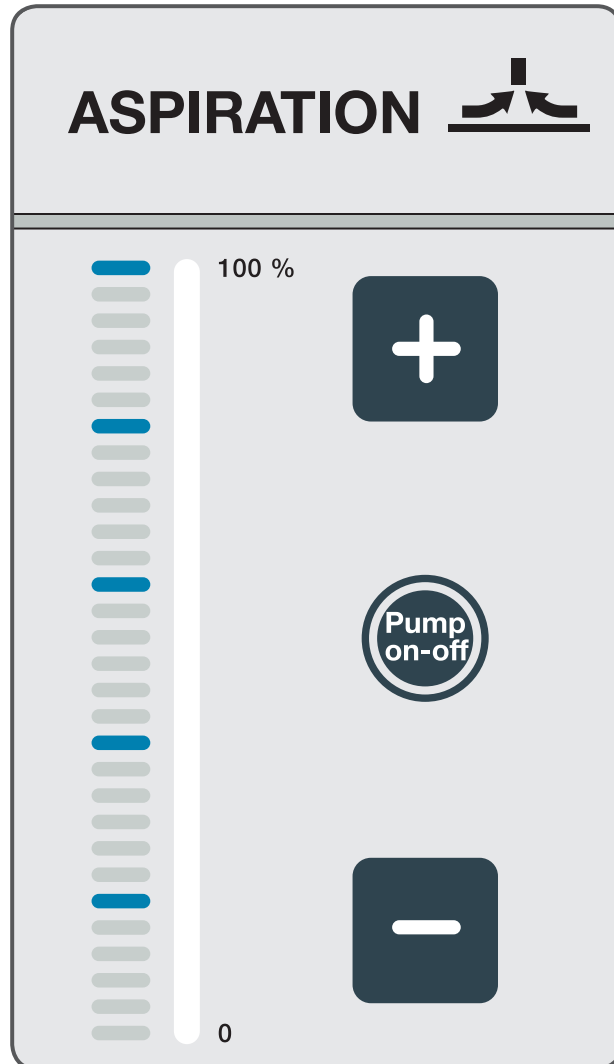
Display panel

- Aspiration pressure (bar/psi)
- Working frequency of the instrument being used (kHz)
- Irrigation flow (ml/min)
- Instrument procedure time since application was started (min)
- ERROR indicator light and ERROR codes
- OK indicator light

Application:

- Selective tissue dissection ✓
- Removal of fibrin tissue and breaking up biofilms ✓
- Tissue cutting and disconnecting ✓
- Mechanical removal and cutting of bones ✓
- Wound debridement and wound cleansing ✓
- Tissue coagulation ✓

Operator control panel: **aspiration**



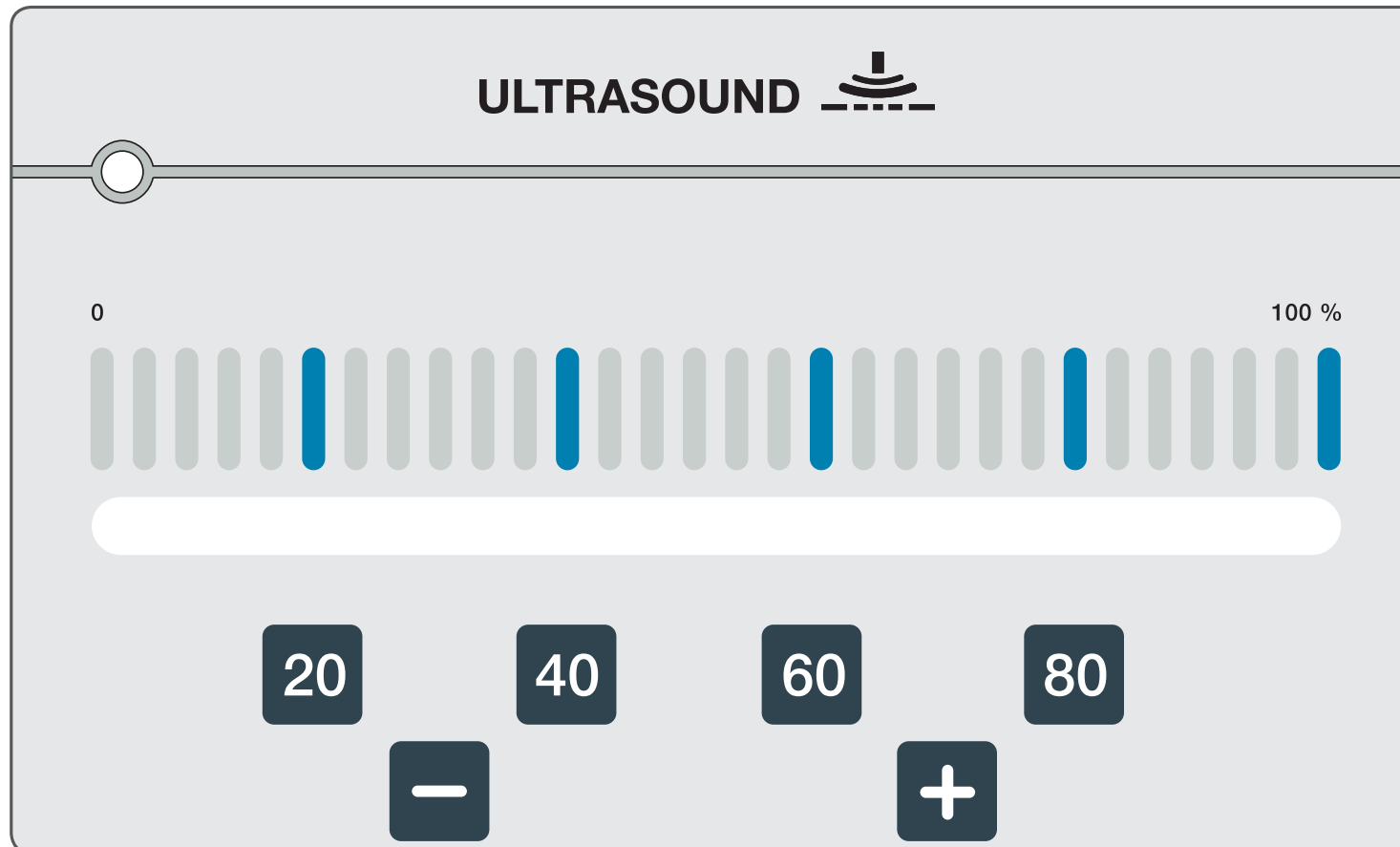
- *Percental display*
- *Increase and decrease aspiration pressure*
- *Button for switching on and off aspiration*



Söring

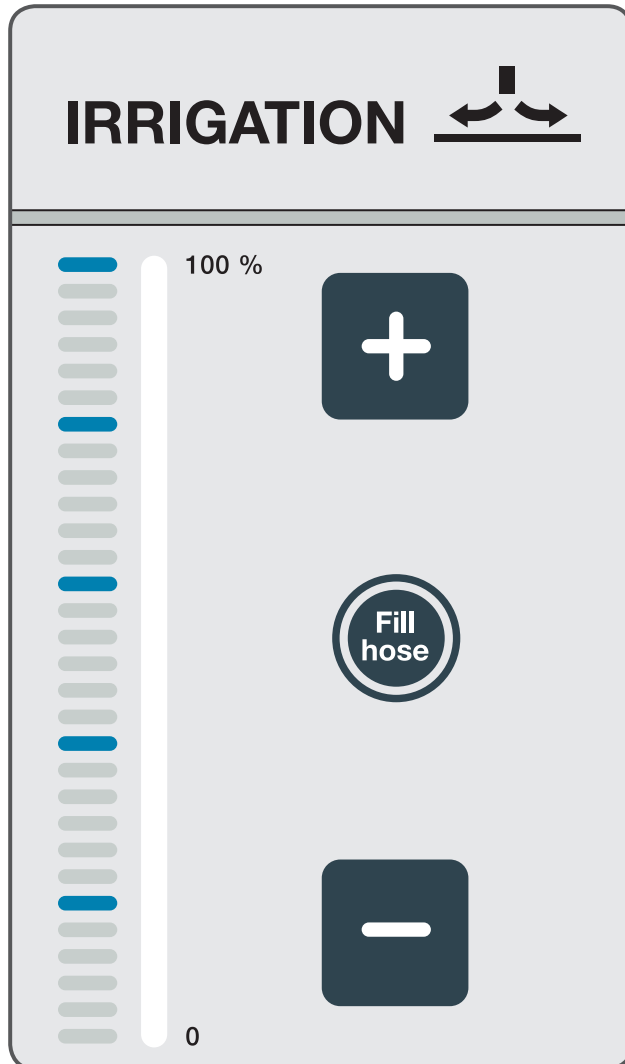
INNOVATIVE SURGERY

Operator control panel: **ultrasonic power**



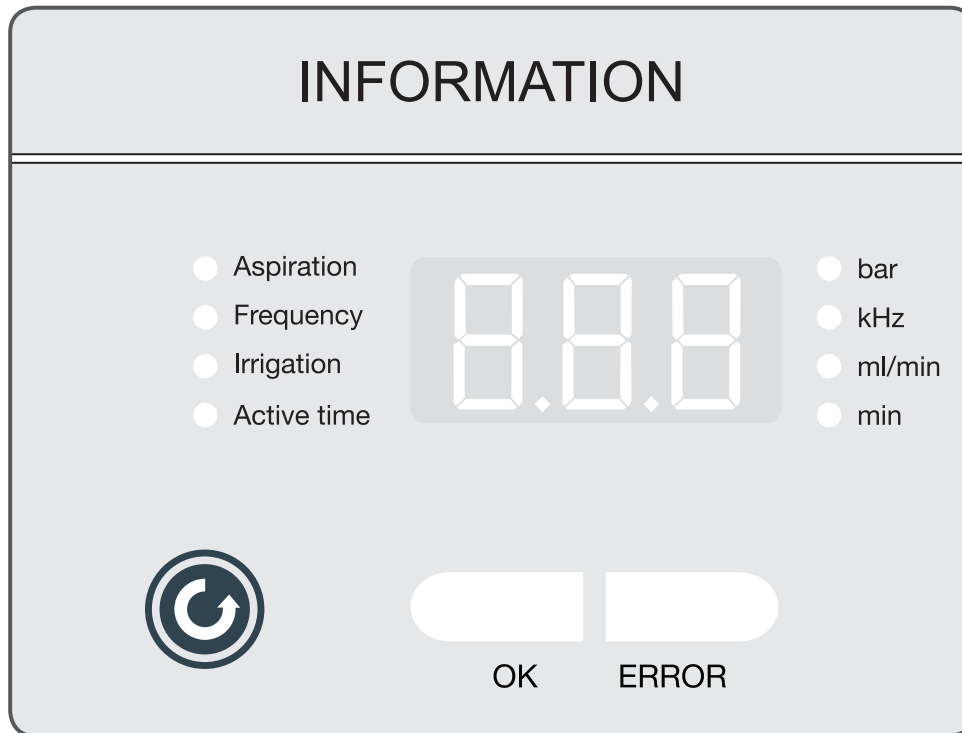
- *Percental display*
- *Increase and decrease ultrasonic power*
- *Direct selection of ultrasonic power*

Operator control panel: **irrigation**



- *Percental display*
- *Increase and decrease irrigation flow*
- *Button for filling the double or irrigation tubing*

Display panel: **information**



- *Aspiration pressure (bar/psi)*
- *Working frequency of the instrument being used (kHz)*
- *Irrigation flow (ml/min)*
- *Instrument procedure time since application was started (min)*
- *ERROR indicator light and ERROR codes*
- *OK indicator light*